

The company

Facts and figures at a glance

Revision of 31 December 2019



Wir bewegen Dresden.



COMPANY PROFILE

Shareholders

Technische Werke Dresden (TWD)

The City of Dresden is a one hundred per cent shareholder in TWD.

Supervisory board

Chair of the board:

Mayor Raoul Schmidt-Lamontain

Deputy: Jürgen Becker (ver.di)

The supervisory board consists of representatives of the shareholder and the employees.

Managing directors

Andreas Hemmersbach (Finance and Technology)

Lars Seiffert (Human Resources)

Mission

We move Dresden.

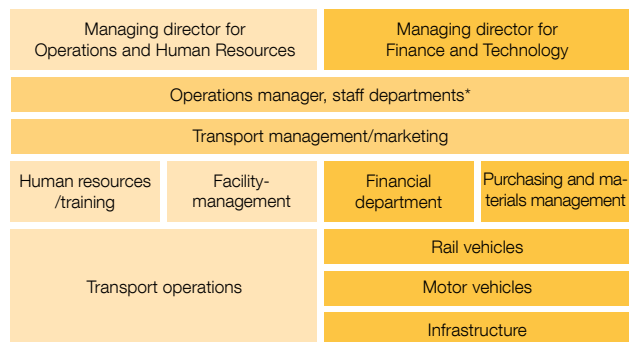
We design, fulfil and develop mobility services in and around Dresden.

Our goal is to attract increasing numbers of customers.

We offer quality and good service, and ensure efficiency.

We help give people in Dresden a good quality of life now and in the future, with environmentally friendly products and by working sustainably.

ORGANISATION



* Executive office, corporate development, quality management, occupational safety and environmental protection, central controlling, internal auditing

LOCATIONS

Depots

Trachenberge	Trachenberger Strasse 40
Gorbitz	Schlehenstrasse 25
Reick	Niedersedlitzer Strasse 31
Gruna	Tiergartenstrasse 96

Administration

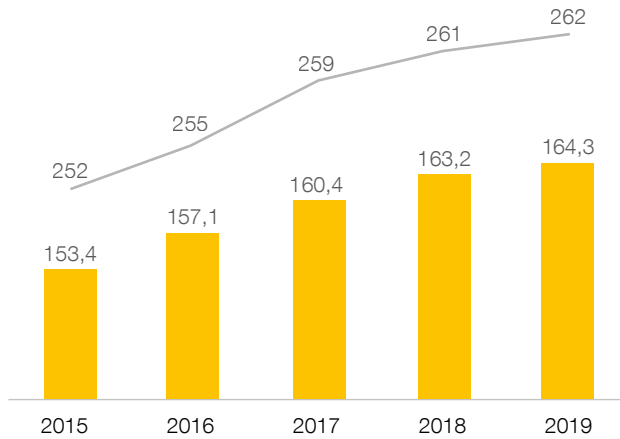
Main Office	Trachenberger Strasse 40
Infrastructure	Hohenthalplatz 7

Customer service

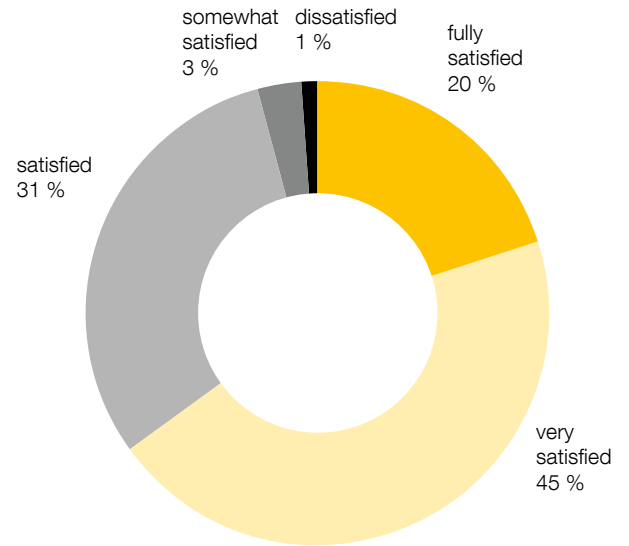
Postplatz	Wilsdruffer Strasse 1
Albertplatz	
Central station	
Prager Strasse	
Trachenberge	Trachenberger Strasse 40

CUSTOMERS

— Passengers, in millions
— Journeys per resident and year



CUSTOMERS



Source: Kantar TNS



ENVIRONMENT

	Unit	2018	2019
Bus	t	9,837	9,837
Bus (third-party)	t	4,038	5,098
Commercial vehicles	t	541	538
Ferry	t	145	155
Total	t	14,561	15,628
Difference to previous year	%	-4.1	+7.3

Based on: Diesel consumption

Indirect CO₂ emissions

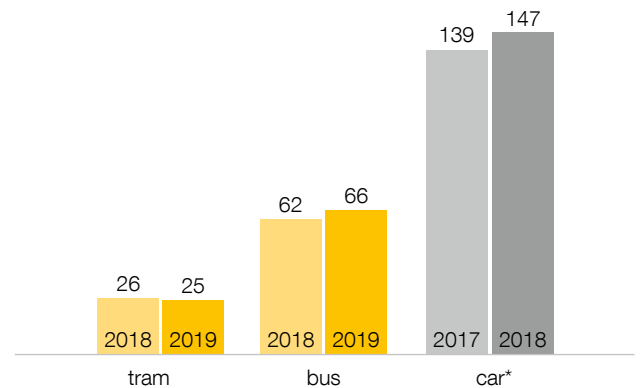
	Unit	2018	2019
Trams	t	14,729	13,765
Hillside railways	t	37	35
Goods trams	t	24	24
Points heating	t	115	67
Tram driving school	t	42	62
Specialised vehicles for track maintenance	t	25	22
E-bus	t	9	6
Total	t	14,981	13,982
Difference to previous year	%	-17.8	-6.7

Based on: Traction current used and DREWAG current labeling

ENVIRONMENT



Energy consumption per passenger kilometre



*average value (source: German Environment Agency)

STAFF

	2018	2019
All staff	1,860	1,927
of whom worker	1,399	1,451
of whom tram drivers	532	574
of whom bus drivers	242	238
of whom dual-mode drivers	170	178
of whom employed directly	461	476
Trainees	87	85
Einstiegsqualifizierung	1	0
Studenten Berufsakademie	1	1
Average age in years	47.6	47.4
Percentage of women in %	21.5	22.2
Percentage of women in management positions in %	24.4	26.5
Percentages of severely disabled staff and persons similarly classified in %	6.1	6.3
Employee turnover in %	1.1	1.7
Health rate in %	90.8	90.7

Figures show annual average



ANNUAL ACCOUNTS

	2018	2019
Turnover in € million	149.2	153.9
Trend in %	2.8	3.2
Operations results before loss in € million	-39.6	-42.0
Cost coverage in %	80.0	79.4
Investment in fixed assets (excluding financial assets) in € million	36.3	93.3
Funding in € million	20.3	58.7
Balance sheet total in € million	327.4	349.1

TRANSPORT PERFORMANCE

	2018	2019
Vehicle kilometres (million)	27.3	27.6
Place kilometres (million)	4,121.1	4,118.4
Passenger kilometres (million)	782.7	788.7



NETWORK

	Straßenbahn	Bus
Total number of routes	12	28
Total route length in km	213	315
Shortest route	10 (11.2 km)	79 (2.6 km)
Longest route	4 (28.6 km)	63 (24.8 km)
Average distance between stops in m	472	459
Average travel speed in km/h	19.2	19.9

	2018	2019
Total route length in km	528	528
Total stops	722	719
of which trams	154	151
of which buses	461	461
of which buses and trams together	107	107
Barrier-free stops in %	49.6	50.2

OPERATION AREA



Size

Operating area: 428 km²
City of Dresden: 328 km²

Residents

Operating area: 624,423
City of Dresden: 554,734

on 30 June 2019



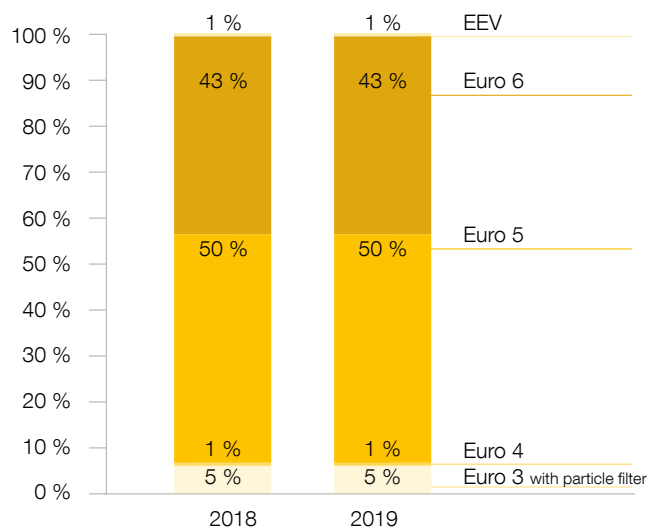
TRAM VEHICLES

	2018	2019
Total vehicles	184	184
Low-floor light-rail trams NGT D12 DD	43	43
Low-floor light-rail trams NGT 8 DD	23	23
Low-floor light-rail trams NGT D8 DD	40	40
Low-floor light-rail trams NGT 6 DD	60	60
Tatra T4D trams	18	18
Commercial vehicles		
Railcars	11	11
Trailers	4	4



BUS VEHICLES

	2018	2019
Total vehicles	141	141
MB low-floor articulated bus	67	67
MB hybrid articulated bus	8	8
MAN low-floor standard bus	1	1
MAN low-floor articulated bus	30	30
MAN hybrid bus	3	3
Solaris low-floor standard bus	7	7
Solaris low-floor articulated bus	18	18
Solaris electric bus	1	1
HESS hybrid articulated bus	6	6
Commercial vehicles	135	143
of which electric cars	4	10



HILLSIDE RAILWAYS

Loschwitz – Weisser Hirsch Standseilbahn funicular railway

Track length:	670 m
Route length:	547 m
Height difference:	94 m
Track width:	1,000 mm
Journey time:	5 min.
Capacity:	59 people per car

Loschwitz – Oberloschwitz Schwebebahn suspension railway

Route length:	274 m
Height difference:	84.2 m
Journey time:	4.5 min.
Capacity:	40 people per car

ELBE FERRIES

Ferry lines

Johannstadt – Neustadt (passenger ferry)
Niederpoyritz – Laubegast (passenger ferry)
Kleinzschachwitz – Pillnitz (passenger and car ferry)

Passenger ferries:	4
Car ferry:	1

MOBIPOINTS

	2018	2019
Number of MOBIpoints	1	12



TRAFFIC INFRASTRUCTURE

	2018	2019
Total track network in km	294.9	295.1
Route length in km	134.3	134.4
of which double-tracked	122.8	122.9
of which single-tracked	11.5	11.5
Tracks on separate beds in km	59.4	60.0
Grassed tracks in km	28.4	28.4
Condition-related speed-reduced sections in km	8.9	8.7
Points	645	650
Gauge: 1.450 mm		
Traction current system		
Overhead lines in km	316.5	317.8
Rectifier substations	53	55
Installed output in MW	122.5	120.5
Traction current cables in km	495	472
Overhead cable voltage: 600V		
Signal systems		
for single-tracked routes	20	20
Crossing systems	27	29



HISTORY

- 1872 Inauguration of the horse-drawn carriage service
- 1889 Foundation of the German Tramcar Company
- 1893 First electric tram line: Schlossplatz – Schillerplatz
- 1895 Commissioning of the Standseilbahn funicular railway, Loschwitz – Weisser Hirsch
- 1901 Commissioning of the Schwebe suspension railway, Loschwitz – Oberloschwitz
- 1906 Foundation of the Municipal Tramcar Company
- 1914 Inauguration of the motor omnibus service
- 1931 “Grosser Hecht” tramcar comes into operation
- 1947 Inauguration of the trolley bus service in Dresden
- 1951 Formation of the City of Dresden’s People’s Own – VEB (K) – transport company
- 1954 First delivery of “Ikarus” motor omnibuses from Hungary (use to 2001)
- 1969 The first Tatra tramcars come into use from the ČSSR
- 1973 First public transport with automated ticket stamping in East Germany
- 1975 Stopping trolley bus service
- 1981 Inauguration of the tram route to Prohlis
- 1986 Inauguration of the tram route to Gorbitz
- 1993 Company becomes Dresdner Verkehrsbetriebe AG
- 1995 First NGT 6 DD light rail tram delivered
- 1996 Tram depot opens in Gorbitz
- 2000 Freight tram rollout
- 2001 First NGT 8 DD light rail tram delivered
- 2003 First NGT D12 DD light rail tram delivered
- 2004 Inauguration of the tram route to Kaditz
- 2006 First NGT D8 DD light rail tram delivered
- 2007 First hybrid bus enters operation
- 2008 Inauguration of the tram route to Pennrich
- 2011 Inauguration of the tram route to the MESSE DRESDEN trade fair
- 2015 Trial use of first electric bus begins
- 2018 Inauguration of first MOBpoint on the Pirnaischer Platz
- 2019 Inauguration of the tram route Oskarstraße - Tiergartenstraße

MUSEUM VEHICLES

Tram railcars

Typ	Car number	Built	Pulls cars:
Berolina railcar	309	1902	87
Uni-directional MAN railcar	734	1913	1029
Large MAN standard railcar	765	1920	
Large MAN standard railcar	1644	1925	1135
Union railcar	937	1927	307
Union railcar	598	1911	
Grosser Hecht	1716	1931	1314
Kleiner Hecht	1820	1938	1219
LOWA ET 54 standard-gauge railcar	1538	1955	1361, 1362
Gotha T 57 bi-directional car	1587	1959	1413
Gotha T 59E uni-directional car	1512	1960	1422
Gotha T4-62 open-plan car	1734	1962	2015
Tatra T4D	2000	1967	272 105-7
Tatra T4D	222 998-7	1969	
Tatra T6A2	226 001-2	1986	



MUSEUM VEHICLES

Tram trailers

Typ	Car number	Built
Standard small coach	87	1911
Standard large coach	307	1912
Standard large coach	1135	1918
Standard uni-directional coach	1029	1925
Floating-axle coach	1219	1925
Steel coach	1314	1929
LOWA EB 54	1361, 1362	1956
B57 bi-directional coach	1413	1959
B59E uni-directional coach	1422	1960
B4-63 open-plan coach	2015	1964
Tatra B4D	272 105-7	1971

Buses

Type	Vehicle number	Built
Büssing NAG 900 N	401 301-3	1938
IFA H6B/S	401 302-1	1956
Ikarus 66.62	401 304-6	1972
Ikarus 260.02	401 204-5	1988
MB O 405	401 205-3	1990



Dresdner Verkehrsbetriebe AG
Trachenberger Strasse 40
01129 Dresden, Germany
Service +49 351 857-1011
E-mail service@dvbag.de

photos:
DVB, Sandra Spindler
(Page 4/5)

Press date: April 2020
Subject to alteration.